



2023 - 2024 Prospectus

Your Future at Henlow

Henlow Academy is at the forefront of the move towards primary/secondary in Central Bedfordshire. We began life in 1976 as a middle school and are now fully established as a thriving secondary school. The journey has been an incredible one for our community and we are proud to invite you to come and join us as we take our next steps.

The surrounding countryside has always been a wonderful feature of our setting but the buildings themselves have been transformed in recent years. If you have visited before, be prepared for a few surprises, including a brand new 2 storey building with a four court sports hall, large classrooms and incredible science laboratories. However, it may be the transformation of the original buildings that takes your breath away – the old gym has become an auditorium, a food technology suite and graphics facilities impress upstairs and the new library (Henlow Hub) dominates the centre of the school. I hope the descriptions and photographs convince you to come and visit to see the incredible developments for yourself.

As a secondary school we now have superb facilities and offer a curriculum full of possibilities designed to develop the interests of our young people. As they progress throughout the school they begin selecting which areas they wish to pursue further in Years 7 and 8. They have an increased choice alongside a community option in Year 9 and ultimately those subjects they wish to focus on at GCSE/BTEC level. Our commitment in our curriculum and staffing matches the investment in our new buildings. In addition, our secondary Heads of Department have considerable experience at teaching GCSE. We are excited that our first Year 11 students will receive their GCSE exam results in the summer of 2024.

I have focussed on the uplifting ways in which Henlow Church of England Academy has changed as it has become a secondary school but my final points draw attention to what hasn't changed. As a community our ambition is driven by our ethos – every young person deserves to enjoy their learning by receiving the right blend of nurture and challenge. A genuine warmth and sense of community defines our approach and underpins all aspects of Henlow life. As teenagers make important decisions about the person that they ultimately want to become, we build positive relationships with them and ensure that they are supported to be the fully rounded person they hope to be.

In 2021 Henlow Academy became the founding member of Poppy Hill Multi Academy Trust which now includes Meppershall Academy. We enjoy strong links with our feeder schools which are now primaries, the Diocese of St Albans and a wide number of community and charity organisations. The SIAMS inspection of 2017 was 'Outstanding' and Ofsted inspections have been consistently 'Good' including in 2019 where our balance between personal development and academic achievement was highlighted.

I hope this prospectus and our website www.henlowacademy.co.uk encourage you to come and meet us and experience life at Henlow.

Caren Earp – Executive Head Teacher





Excellence in Achievement

Lessons are vibrant and challenge students to think 'outside the box', beyond the limits of academic success. We emphasise rigour and a love of learning and are as impressed by a stimulating musical performance or a courageous piece of art as we are by a brilliant essay or the solving of a complex mathematical equation.

At Henlow Academy, we have a thriving house system comprising 5 houses, which continues through to Year 11. Students form a strong allegiance to their house and enjoy the competitive spirit of sports, activities and events.

We give our students opportunities to develop important leadership skills throughout their school life, students can become Learning Leaders and Sports Leaders. We have a Prefect system in place and students have the opportunity to become House Captain or Head Student - a high-profile ambassadorial role within the school.

"Leaders have created a good balance between pupils' academic and personal development. Pupils enjoy learning a broad range of subjects. They also learn about the school's values of honesty, enthusiasm, nurture, love, originality and wisdom."

Ofsted Good - 2019





Our Curriculum

Year 7~9

Alongside the traditional subjects studied in school, students at Henlow have the unique opportunity to co-construct their curriculum through the options programme.

In Year 7 and 8, students can choose from a wide selection of elective subjects which provide stretch and challenge, prepare them for their future careers and broaden their horizons. To view the extensive range of Year 7 and 8 electives on offer, please visit our website www.henlowacademy.co.uk.

In Year 9, students continue to build a strong foundation of understanding of the traditional English Baccalaureate subjects (English, Maths, Science, Languages, Geography, History, Computer Science) alongside a broad and balanced mix of foundation subjects to prepare them for Key Stage 4.

The Curriculum Options Programme and Community Options form the choice element of Year 9. The Duke of Edinburgh Bronze Award is the most popular choice within the Community Options Programme.

As a Church of England school with a community focus, we feel it is important for all students to continue to benefit from the study of Religious Education and a Modern Foreign Language. Both form part of the compulsory offer in Year 9.

ATHLETICS MUSIC TECHNOLOGY ILLUSTRATION
FILM AND MEDIA FIRST AID POLITICAL PHILOSOPHY GARDENING
THEATRE MAKE-UP GAMES DEVELOPMENT CREATIVE WRITING
1940'S BRITAIN STRENGTH & CONDITIONING POP UP STORY BOOK FOOTBALL
FURTHER MATHS NEW ZEALAND: CULTURE & LANGUAGE
TRAMPOLINING BAND PRACTICE
FOOD BASICS & STYLING CRITICAL THINKING SPANISH EMBROIDERY



Our Curriculum

Year 10 & 11

Key Stage 4 combines compulsory study with a wide range of options to allow students to build a personalised programme suitable for their needs and ambitions.

Compulsory study areas include English Literature and English Language, Mathematics, Science (Combined Science: Trilogy), Religious Education, Core Games and PE and Personal, Social, Health, Careers Education (PSHCE).

In addition to the compulsory subjects, students select a further four choices which include, but is not limited to: Triple Science, Computer Science, Geography, History, French, Art, Business, Drama, Music, PE and Psychology. Full details of our complete GCSE offering can be found on our website www.henlowacademy.co.uk

Practical learning opportunities which include literacy, numeracy and money management may be added where appropriate.

A rich and varied extra-curricular programme with sport, music and drama is highly valued.

We were one of the first schools in the country to be inspected according to Ofsted's new framework, inspectors noted that pupils are "polite, mature and considerate towards others" and that "the school's curriculum contributes strongly to pupils' wider personal development."

Ofsted Good - 2019



We're a Team

Core PE aims to encourage students to pursue and maintain healthy and active lifestyles. It is an all-inclusive programme designed to provide opportunities for pupils to be inspired and become physically confident while supporting their mental health. Pupils will participate in a variety of sporting activities and will be able to select options throughout the year.

GCSE Physical Education will equip learners with the knowledge, understanding, skills and values to develop and maintain their performance in physical activities and understand the benefits to health, fitness and well-being.

Partnerships for Learning

At Henlow Church of England Academy, we have built a strong and capable team of tutors led by our Heads of Year. Their role is to support students with their pastoral needs and their day to day operation in school. Our excellent knowledge of our students and ability to provide the right care, at the right time, has been recognised by both Ofsted and SIAMS as being a very strong element of our offer.

We invest a great deal into ensuring that students are able to live their lives to the full, providing nurture and support where needed whilst maintaining a high level of expectation and challenge.

It is an exciting time to be a member of Henlow Church of England Academy. After the COVID pandemic, we have taken every step possible to make all students feel part of our thriving community.

As members of our community, students are the embodiment of Henlow's values and will be the leaders that future students will look up to.

We pride ourselves in ensuring that all students are treated as unique individuals with talent and personality, and we continue to provide outstanding teaching, care and pastoral support for all.





Personal Development

At Henlow our core values are designed to support our students' creative, spiritual and moral education as purposefully as we do their academic progress and achievement. An exceptional school nurtures and develops the whole person and we encourage pupils to be open and enquiring about the wider world and their place and responsibilities within it.

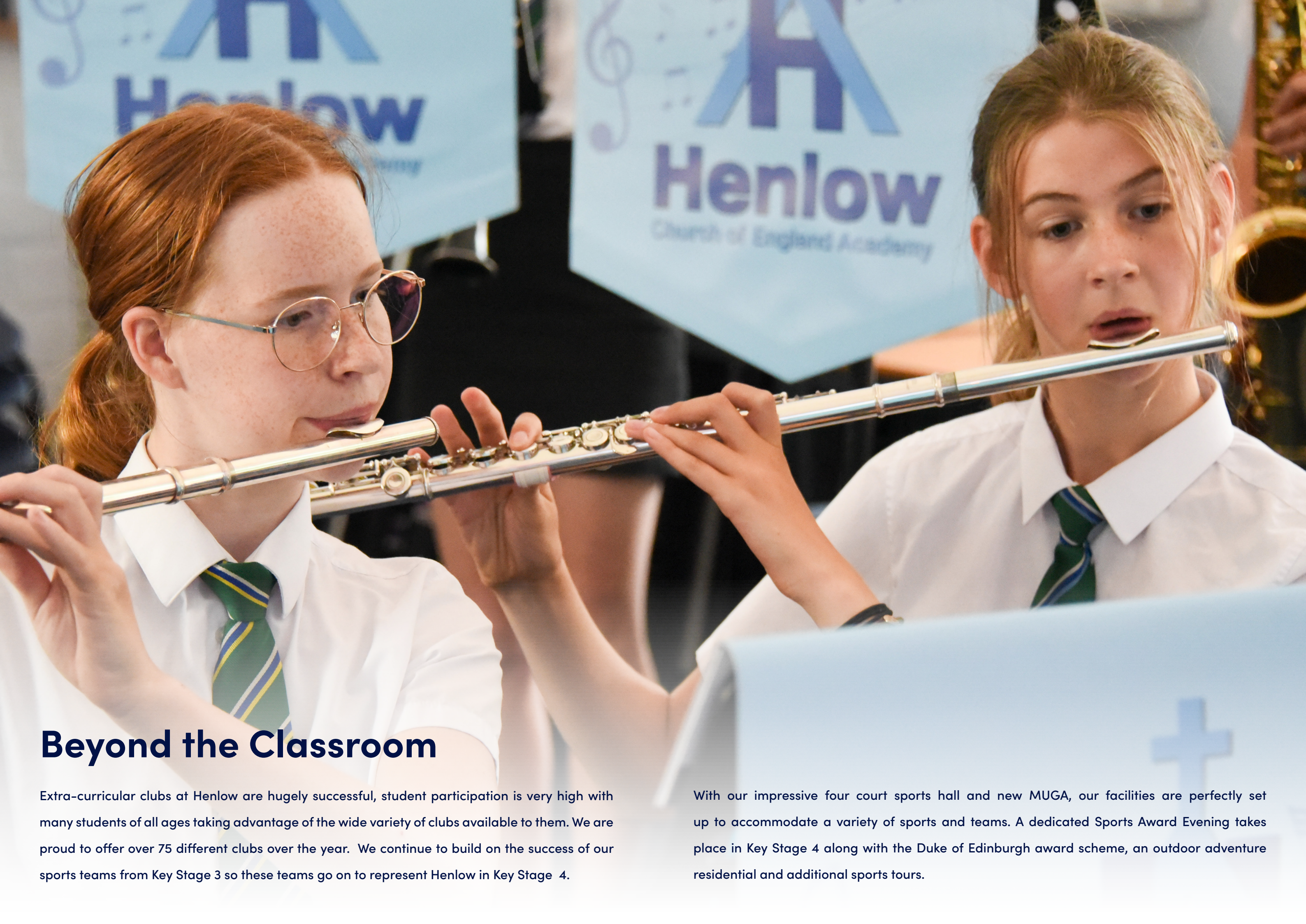
Senior students have an important role within the school, we expect them to lead younger members of our community and to be ambassadors for our ethos and values. As a result of the leadership and determination to achieve, students demonstrate they are the key to their own success and the success of the wider student population. Charity events, cultural enrichment, school productions and sports events play an important role within the school.

We are proud to be recognised for our exceptional work with students who need additional support. Parts of the new school are specially designed SEND areas where students receive additional support on their educational journey in a calm and nurturing environment to bring out their full potential.

Our aim is to guide our students, your children, to become well rounded members of our community, to help them flourish, thrive and to help them live their lives to the full.

"As a clear expression of the school's Christian values in action, pupils are well known as individuals with a range of gifts and talents."

SIAMS 2017 - Outstanding



Beyond the Classroom

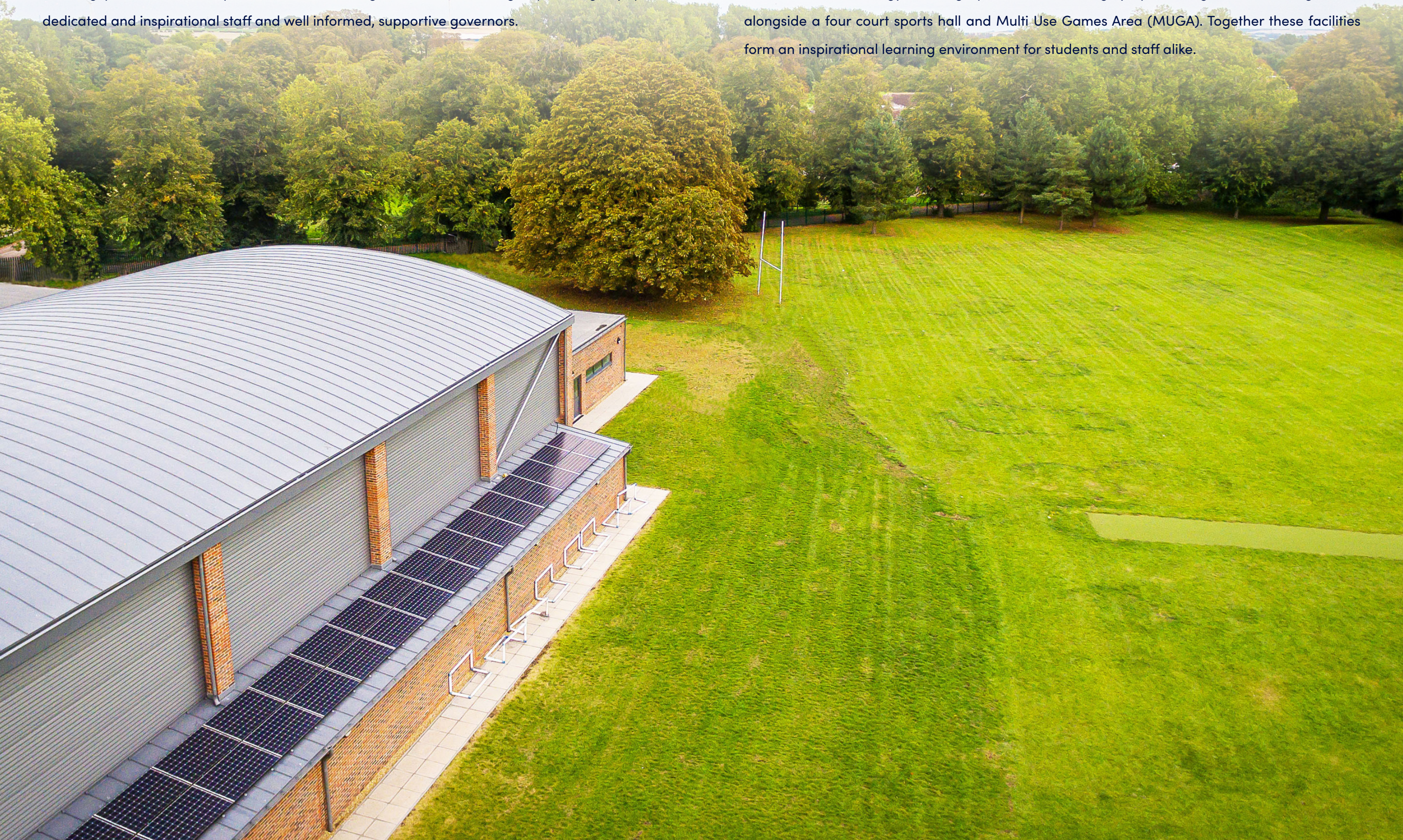
Extra-curricular clubs at Henlow are hugely successful, student participation is very high with many students of all ages taking advantage of the wide variety of clubs available to them. We are proud to offer over 75 different clubs over the year. We continue to build on the success of our sports teams from Key Stage 3 so these teams go on to represent Henlow in Key Stage 4.

With our impressive four court sports hall and new MUGA, our facilities are perfectly set up to accommodate a variety of sports and teams. A dedicated Sports Award Evening takes place in Key Stage 4 along with the Duke of Edinburgh award scheme, an outdoor adventure residential and additional sports tours.

Building for Tomorrow

At Henlow we believe the learning environment is critical to our students development. Set in stunning parkland our unique school is brimming with a wonderful group of eager pupils, dedicated and inspirational staff and well informed, supportive governors.

Since 2017, Henlow's site has developed significantly to include state of the art science labs, a new food technology room, graphics suite and highly specified general teaching rooms alongside a four court sports hall and Multi Use Games Area (MUGA). Together these facilities form an inspirational learning environment for students and staff alike.





Henlow Church of England Academy
Church Road
Henlow
Bedfordshire
SG16 6AN
01462 813733



Henlow Church of England Academy



henlow_academy



@HenlowCEAcademy



info@henlowacademy.org.uk



www.henlowacademy.co.uk



Henlow Church of England Academy is part of
Poppy Hill Church of England Multi Academy Trust